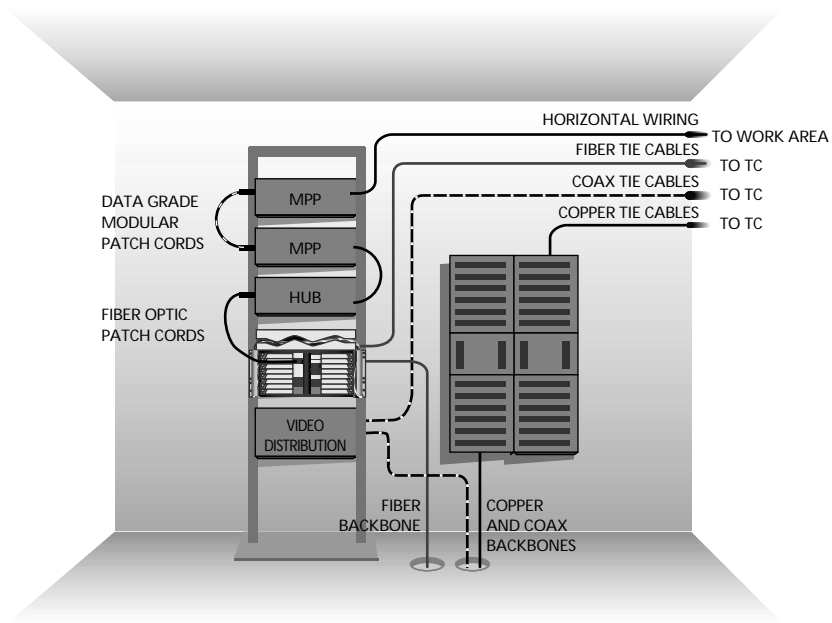




Cable Management Tray Panels

End User Application

Intermediate Distribution Frame



The intermediate distribution frame (IDF) area is the point of interconnection between building backbone cables and horizontal tie cables serving telephone closets or station wire serving the individual work locations.

IDFs usually serve a single floor and are typically arranged vertically in a building riser area. Electronic hub equipment is normally installed within the IDF area because of the proximity to the backbone cabling. In many cases, the IDF is the last connection point prior to the end workstation connection. In large buildings, IDFs may serve multiple telephone closets (TCs) via tie cables.



Cable Management Tray Panels

Features

Individual Cable Management Trays

- Ensure 2" bend radius
- Allow jumper storage at the point of termination

CMT Fiber Cable Storage Capacity

Cable Size	Length
3 mm	8 - 10 m (26' - 32.8')
2 mm	12 - 20 m (39' - 65.6')
1.7 mm	24 m (78.69')

Feature a swing out design that provides superior protection AND easy access to terminations

One catalog number provides all the necessary panel equipment

- Can be mounted in 19" or 23" EIA or WECO racks
- Includes cable shields to protect jumpers
- Includes cable clamps for securing multifiber cable to the chassis

Panels can be stacked for larger density applications

Complete family of products to serve any need

Termination/Storage/Splice panel

- Combines termination/storage and storage/splice panels into one chassis
- Comes equipped with adapters only or with factory-installed pigtails to reduce installation time
- Splice area slides out for easy access
- Comes equipped with removable splice trays
- Splice area provides room for storage of excess pigtails and buffer tubes

Termination/Storage Panel

- Can be used as FOT interface panel
- Available with adaptors only or with ADC-quality factory-installed intrafacility (IFC) or outside plant (OSP) cable
- Can be used in conjunction with storage/splice panels to give termination/storage/splice solution in two separate panels

Storage/Splice Panel

- Splice area slides out for easy access
- Comes complete with removable splice trays
- Splice area provides room for storage of excess pigtails and buffer tubes

CMT panels are compatible with dual, quad, or tri (LX.5® or LC) bulkhead plates

Dual plates give the best cable management solution, offering the most storage per termination (4-5 meters per termination, 8-10 meters per tray using 3 mm jumpers)

Quad plates provide a good cable management solution at increased density by offering more terminations and less storage per termination (2 meters per termination, 8-10 meters per tray using 3mm jumpers)

Tri (LX.5® or LC) plates provide a good cable management solution at the highest density. The use of 1.7 mm cable allows a large amount of jumper storage as well



Cable Management Tray Panels

Fiber Capacity

Cable Management Tray Panels

3 / 0 4 • 8 0 1

Termination/Storage/Splice Panels			Maximum Fiber Capacity		
Panel Style	Height	Rack Units	Dual Plates	Quad Plates	Tri (LX.5® or LC) Plates
FDP-A	3.5" (8.89 cm)	2U	8	16	24
FDP-B	5.25" (13.34 cm)	3U	12	24	36
FDP-C	7" (17.78 cm)	4U	24	-	-
FDP-D with double splice drawer	8.75" (22.23 cm)	5U	24	48	72
FDP-E	12" (30.48 cm)	7U	36	72	108
FDP-F	15.75" (40.00 cm)	9U	48	96	144
FDP-G	22.75" (57.79 cm)	13U	72	144	216
Termination/Storage Panels			Maximum Fiber Capacity		
Panel Style	Height	Rack Units	Dual Plates	Quad Plates	Tri (LX.5® or LC) Plates
FDM-12	3.5" (8.89 cm)	2U	12	24	36
FDM-24	5.25" (13.34 cm)	3U	24	48	72
FDM-36	8.75" (22.23 cm)	5U	36	72	108

Jumper Cable Size	Storage per Termination		
	Dual Plates	Quad Plates	Tri (LX.5® or LC) Plates
1.7 mm	-	-	4 m
2 mm	8-10 m	3-4 m	-
3 mm	4-5 m	2 m	-



Cable Management Tray Panels

Cable Routing

CMT Pigtail and Jumper Routing

Cable Management Tray Panels



Figure 1: Drawer rotates open on hinge



Figure 2: Pigtail routes and connects using 'S' loop



Figure 3: Jumper is connected



Figure 4: Jumper is routed and stored by looping around spools

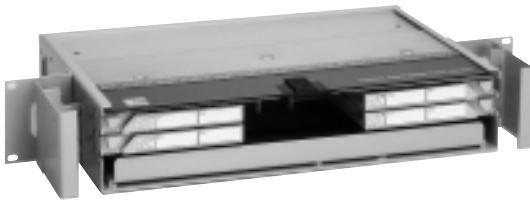


Termination/Storage/Splice Panels

Fiber Panel Data

- Termination
- Splice
- Pigtail and Jumper Storage
- Wall Mount
- Rack Mount

FDP-A 3.5" (2U) Fiber Distribution Panel



Fiber Capacity:

Plate Style:	Dual	Quad	Tri (LX.5® or LC)
	8	16	24

Dimensions:

3.5" H x 19" or 23" W x 12" D
(8.89 x 48.26 or 58.42 x 30.50 cm)

Weight (empty):

12 lbs. (5.45 kg.)

FDP-B 5.25" (3U) Fiber Distribution Panel



Fiber Capacity:

Plate Style:	Dual	Quad	Tri (LX.5® or LC)
	12	24	36

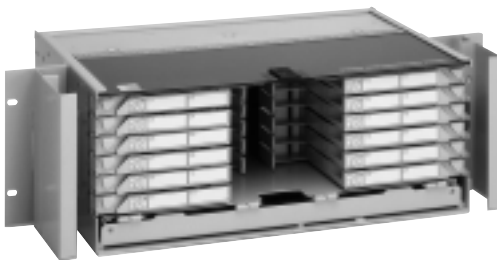
Dimensions:

5.25" H x 19" or 23" W x 12" D
(13.30 x 48.26 or 58.42 x 30.50 cm)

Weight (empty):

15 lbs. (6.82 kg.)

FDP-C 7" (4U) Fiber Distribution Panel



Fiber Capacity:

Plate Style: Dual Only – 24

Dimensions:

7.0" H x 19" or 23" W x 12" D
(17.78 x 48.26 or 58.42 x 30.50 cm)

Weight (empty):

17 lbs. (7.73 kg.)



Termination/Storage/Splice Panels

FDP-D 8.75" (5U) Fiber Distribution Panel



Fiber Capacity:

Plate Style:	Dual	Quad	Tri (LX.5® or LC)
	24	48	72

Dimensions:

8.75" H x 19" or 23" W x 12" D
(22.2 x 48.26 or 58.42 x 30.50 cm)

Weight (empty):

17 lbs. (7.73 kg.)

FDP-E 12" (7U) Fiber Distribution Panel



Rack Mount only

Fiber Capacity:

Plate Style:	Dual	Quad	Tri (LX.5® or LC)
	36	72	108

Dimensions:

12" H x 19" or 23" W x 12" D
(30.5 x 48.26 or 58.42 x 30.50 cm)

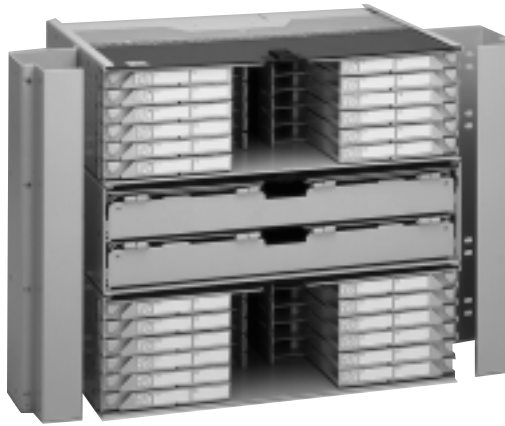
Weight (empty):

26 lbs. (12 kg.)



Termination/Storage/Splice Panels

FDP-F 15.75" (9U) Fiber Distribution Panel



Rack Mount only

Fiber Capacity:

Plate Style:	Dual	Quad	Tri (LX.5® or LC)
	48	96	144

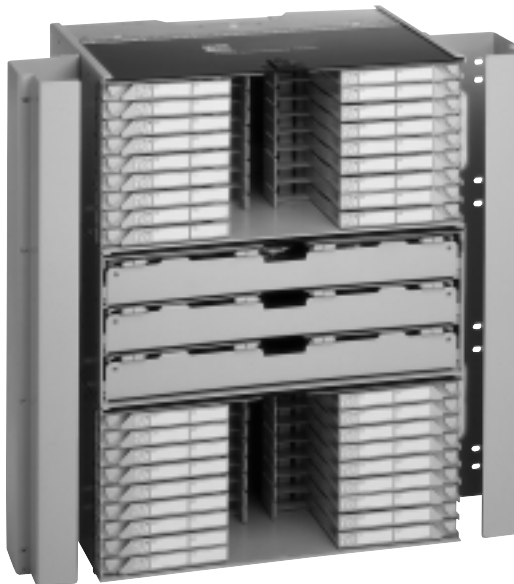
Dimensions:

15.75" H x 19" or 23" W x 12" D
(40.00 x 48.26 or 58.42 x 30.50 cm)

Weight (empty):

37 lbs. (16.82 kg.)

FDP-G 22.75" (13U) Fiber Distribution Panel



Rack Mount only

Fiber Capacity:

Plate Style:	Dual	Quad	Tri (LX.5® or LC)
	72	144	216

Dimensions:

22.75" H x 19" or 23" W x 12" D
(57.8 x 48.26 or 58.42 x 30.50 cm)

Weight (empty):

48 lbs. (21.82 kg.)



Termination/Storage/Splice Panels

Ordering Information

Cable Management Tray Panels

3 / 0 4 • 8 0 1

Catalog Number

FDP- _____

Panel Size

A	3.5" (2U)
B	5.25" (3U)
C	7" (4U)
D	8.75" (5U)
E	12" (7U)
F	15.75" (9U)
G	22.75" (13U)

Bulkhead Style

2	Dual
4	Quad
6	Tri (for LX.5® or LC)
1	Dual recessed ³

Pigtail Style

P	900 micron pigtails ¹
K	3 mm pigtails ²
A	Adapters only

Cable Style

0	None
S	Singlemode
A	50/125 multimode
B	62.5/125 multimode
M	Maxistrip

Ports Loaded

Adapter / Receptacle Style	
Multimode	
For dual or quad plates	
A	FC
9	SC
5	ST®
For dual plates only	
D	Duplex SC
For tri (LX.5® or LC) plates only	
Y	LX.5®
6	LC
Singlemode	
For dual or quad plates	
2	Ultra PCFC
L	FC with zirconia adapter
F	FC 8° angled polish
7	Ultra PCSC
N	SC with zirconia adapter
J	SC 8° angled polish
4	Ultra PCST
P	ST® with zirconia adapter
K	E-2000 8° angled polish
For dual plates only	
E	Duplex SC
For tri (LX.5® or LC) plates only	
X	LX.5®
8	LC

Splice Tray Type

0	None or N/A
1	Bare fusion
2	Heat shrink fusion
3	Mechanical
4	Rotary
5	FibrLok®
7	Raychem Universal (RU)
8	Nortel

¹ Standard for quad and tri bulkhead

² Standard for dual bulkhead

³ For use with in-line attenuators